



DIMENSIONS & FLOOR PLANS



GROUND FLOOR

First Floor Room Dimensions:

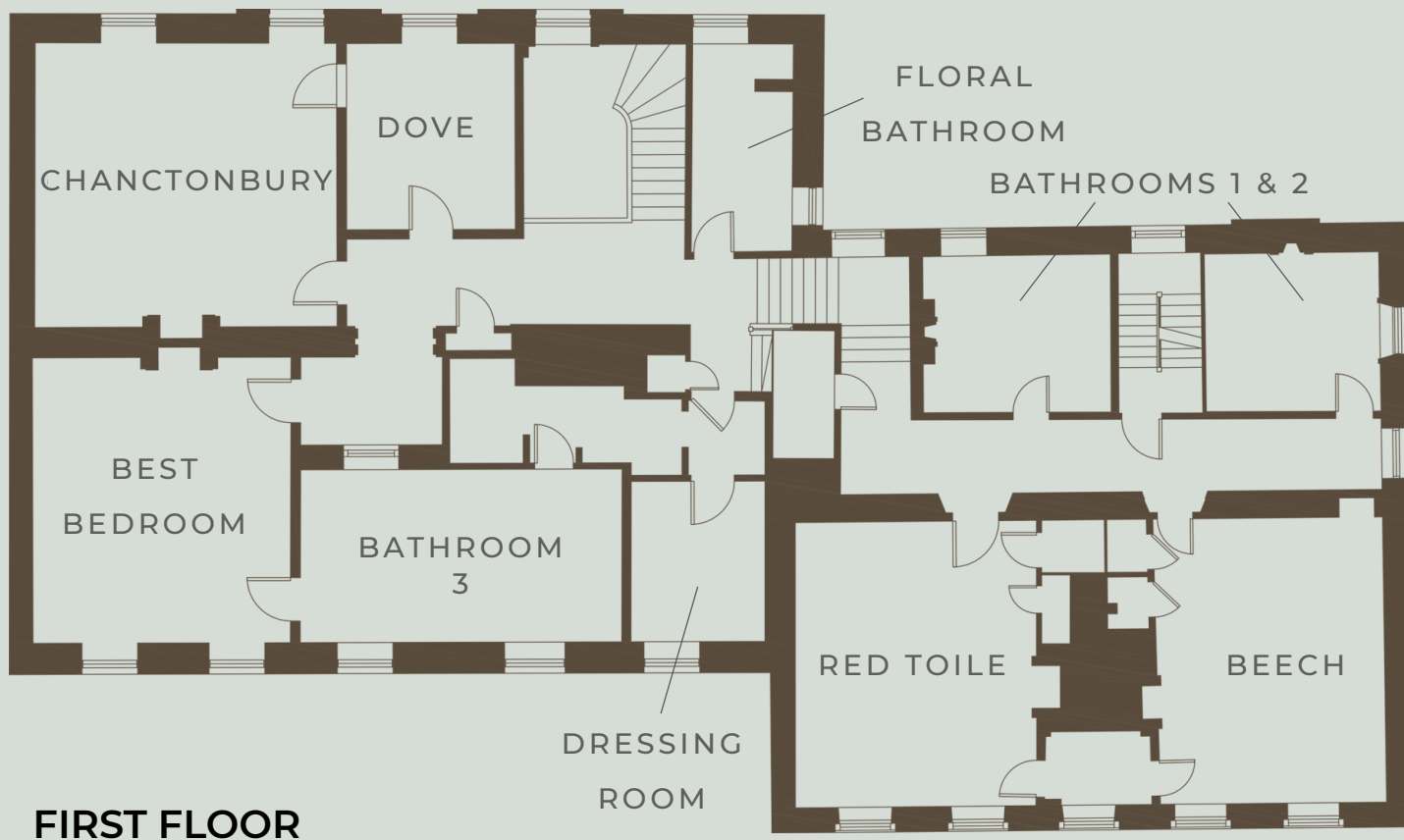
	Room Dimensions	Square Metres	Ceiling Height	Sound System	Natural Daylight	Exit to Grounds	Wifi
The Hall	6m x 10.2m	61.2 sqm	3.96m	No	Yes	Yes	Yes
Kitchen	6.6m x 9m	59.4 sqm	3.9m	Yes	Yes	Yes	Yes
Drawing Room	6m x 8.6m	51.6 sqm	3.87m	Yes	Yes	No	Yes
Ballroom	7.4m x 11.2m	82.8 sqm	5.46m	Yes	Yes	Yes	Yes

Seating Capacity:

- The Hall seats 60 theatre style.
- The Ballroom seats 110 theatre style, 64 on 5ft rounds or 52 on two long trestles tables.



DIMENSIONS & FLOOR PLANS



FIRST FLOOR

First Floor Room Dimensions:

	Sleeping Arrangements and Room Facilities	Natural Daylight	Exit to Grounds	Wifi
Best Bedroom	Superking bed with Private Ensuite Bathroom, Dressing Room and Log Burner	Yes	No	Yes
Chanctonbury	Superking bed with Log Burner, Shared Bathroom (with Dove Room), Sofabed. An additional single bed or cot can also be accommodated in this room.	Yes	No	Yes
Dove	Kingsize Bed with Shared Bathroom (with Chanctonbury Room)	Yes	No	Yes
Floral Bathroom		Yes	No	Yes
Bathrooms 1 & 2		Yes	No	Yes
Beech	Superking Bed or Twin Beds with Private Bathroom. An additional single bed or cot can be accommodated in this room.	Yes	No	Yes
Red Toile	Superking Bed or Twin Beds with Private Bathroom. An additional single bed or cot can be accommodated in this room.	Yes	No	Yes
Dressing Room		Yes	No	Yes
Bathroom 3		Yes	Yes	Yes

Please note: There are two staircases to the ground floor.